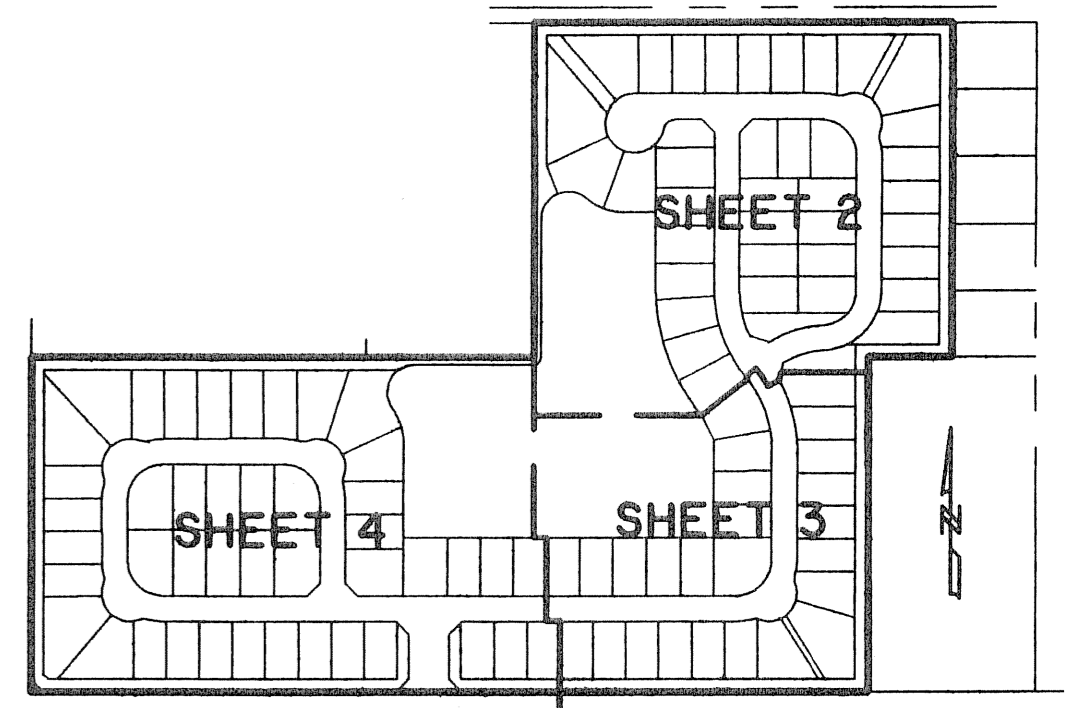


SAGEWOOD
BEING A REPLAT OF PART OF TRACTS 40, 41 AND 45 AND ALL OF TRACTS 43 AND 44, BLOCK 13, PALM BEACH FARMS COMPANY
PLAT NO. 3 AS RECORDED IN PLAT BOOK 2, PAGES 45 THROUGH 54, INCLUSIVE, PUBLIC RECORDS OF PALM BEACH COUNTY, FLORIDA.
LYING IN SECTIONS 3,4,9 AND 10, TOWNSHIP 44 SOUTH, RANGE 42 EAST, PALM BEACH COUNTY, FLORIDA

CITY OF GREENACRES
SHEET 2 OF 4 AUGUST, 2006

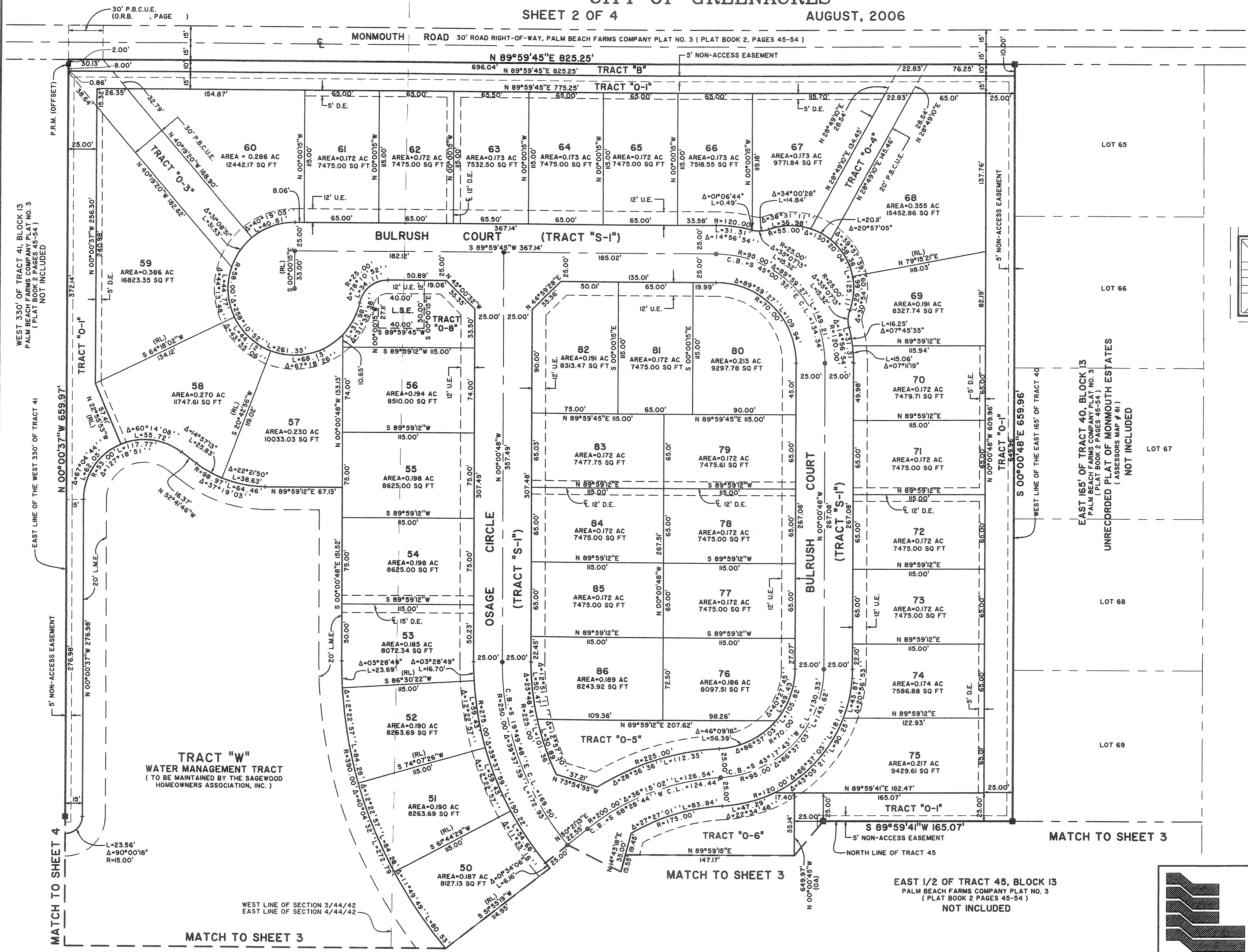
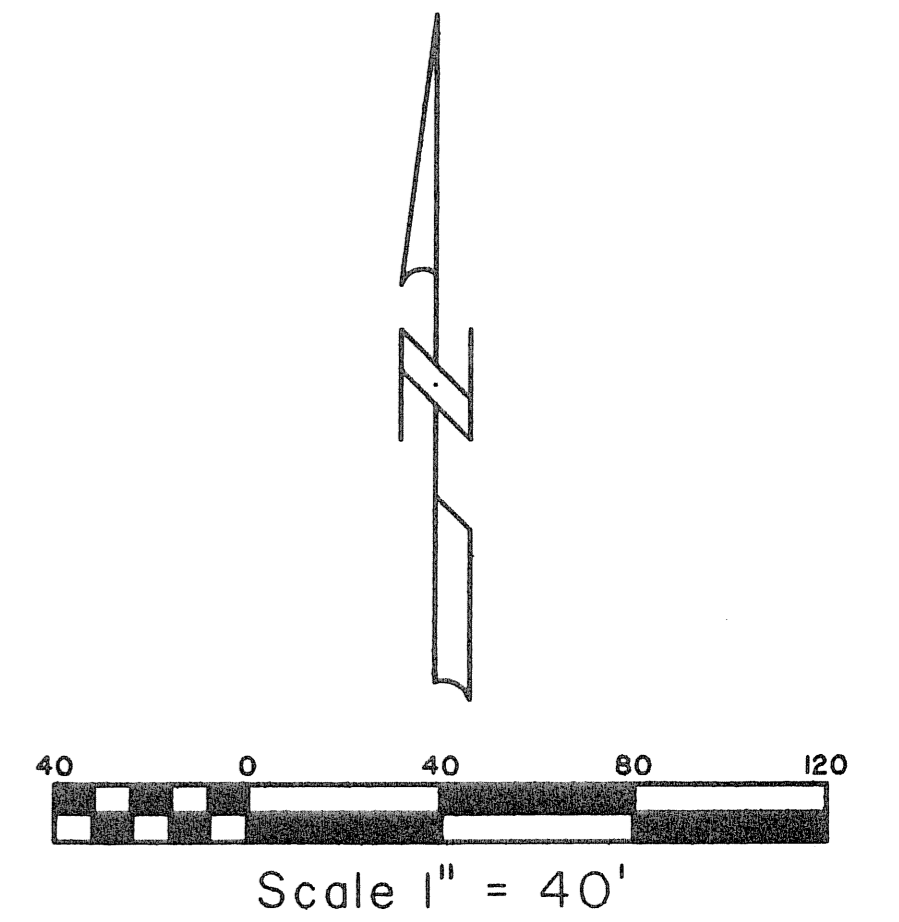
STATE OF FLORIDA
COUNTY OF PALM BEACH
THIS PLAT WAS FILED FOR RECORD AT
M. THIS DAY OF 2006
AND DULY RECORDED IN PLAT BOOK NO.
ON PAGE
SHARON R. BOCK,
CLERK AND COMPTROLLER,
PALM BEACH COUNTY
BY D.C.



KEY MAP
NOT TO SCALE

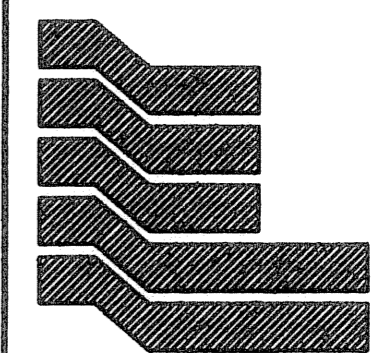
LEGEND

P.C.P.	PERMANENT CONTROL POINT
P.R.M.	PERMANENT REFERENCE MONUMENT
C.M.	CONCRETE MONUMENT
O.R.B.	OFFICIAL RECORD BOOK
C.L.	CENTERLINE
U.E.	UTILITY EASEMENT
D.E.	DRAINAGE EASEMENT
R.	RADIUS
L	ARC LENGTH
Δ	CURVE CENTRAL ANGLE
P.O.B.	POINT OF BEGINNING
P.O.C.	POINT OF COMMENCEMENT
C.B.	CHORD BEARING
L.M.E.	LAKE MAINTENANCE EASEMENT
L.M.A.E.	LAKE MAINTENANCE ACCESS EASEMENT
C.L.	CHORD LENGTH
L.B.	LANDSCAPE BUFFER
L.W.D.D.	LAKE WORTH DRAINAGE DISTRICT
P.B.C.U.E.	PALM BEACH COUNTY UTILITY EASEMENT
L.S.E.	LIFT STATION EASEMENT
RL	RADIAL LINE
○	PROPOSED P.C.P. LOCATION
■	DENOTES SET P.R.M. LB # 4396
□	DENOTES P.R.M. FOUND (AS NOTED)
SQ FT	SQUARE FEET



MATCH TO SHEET 3

EAST 1/2 OF TRACT 45, BLOCK 13
PALM BEACH FARMS COMPANY PLAT NO. 3
(PLAT BOOK 2 PAGES 45-54)
NOT INCLUDED



Landmark Surveying & Mapping Inc.
1850 Forest Hill Boulevard
Ph. (561) 433-5405 Suite 100 W.P.B. Florida
LB # 4396

SAGEWOOD